

Keep these instructions in a safe place!

After installation of the motor attach these instructions to the cable for the electrician.

#### Device functions:

- Commissioning of the drive using assembly cable or radio transmitter

#### Delivery condition (commissioning mode)

- Setting the end positions



#### Warning!



#### Important safety instructions! Observe the following instructions.

##### Risk of injury due to electric shock.

The connections to the 230 V mains **must** be made by authorised specialist personnel.

Check the system (awnings) regularly for wear or damage.

The regulations of the local energy supply company as well as the regulations for wet and damp rooms according to VDE 0100 must be followed when making the connections.

Only use unmodified original **elero** parts.

Keep people away from the system until it is stationary.

When working on the system (servicing, cleaning windows etc.), always disconnect it from the mains supply.

#### Intended use

- Please ensure that the radio installations are not operated in areas of increased possible interference. (e.g. hospitals, airports ...).
- The radio control is only permitted for devices and units with which a functional interference in hand-held/wall-mounted transmitters or receivers poses no danger for persons, animals or materials or where this risk is covered by other safety appliances.
- The operator has no protection whatsoever from interferences by other radio emitters and local terminals (e.g. also from radio installations), that are normally used on the same frequency range.
- Only use radio receivers with equipment and units approved by the manufacturer.

#### Optimal use of the radio signal

- Do not bend the antenna.
- Do not shorten or extend the antenna.
- If reception is poor, adjust the antenna.
- Install the antenna so that it is as exposed as possible.
- The minimum distance between two radio drives must be at least 15 cm.

#### Check the following before installation:

- The drive is only capable of operation as installed.
- Only perform connecting work with the power turned off.
- The blind must be attached to the winding shaft.
- The profile tube must have sufficient clearance from the motor tube.
- Make sure there is sufficient axial play (1–2 mm)

#### Installation in profile tubes

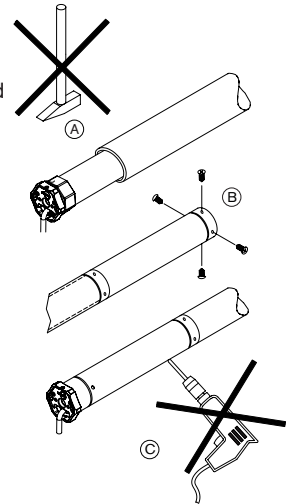
- Ⓐ Push drive with relevant adapter and limit switch crown into the profile tube.

Lay the motor cable so that it is protected, do not kink.

- Ⓑ Secure the counterpart support to prevent axial movement, e.g. screw or rivet on the idler.

Secure the drive axially in the support!

- Ⓒ Attach the blind to the shaft!



#### Warning!



#### Risk of injury due to electric shock.

Do not drill in the area of the motor!

#### Installation



#### Warning!

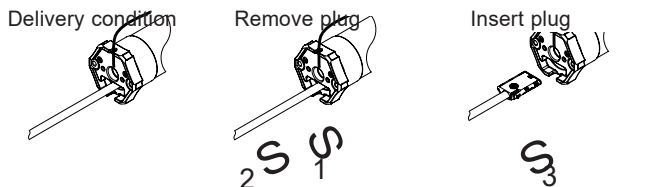
#### Observe the following installation instructions!

- The drive must be fixed in such a way that it does not endanger personnel.
- Before installing the drive, all lines and equipment, which are not required for operation, must be removed from the site.
- During installation, during operation and when work is carried out on the system, the option to separate all poles from the mains must always exist (Hirschmann connector and Hirschmann coupling or a two-pole switch with minimum 3 mm contact gap or all-pole main switch).
- If the drive is controlled by a switch with OFF pre-setting (dead man's button), the momentary contact switch must be fitted at a height of more than 1.50 m and separated from the moving parts. The travel range of the systems must always be visible during operation.
- Moving parts in a drive, which are below 2.5 m, must be protected.
- Set torque and set operating time must meet the requirements of the product which is driven.
- Please note the technical data on the type plate.
- Please note that with this drive (type 11 M motor) the smallest internal tube diameter corresponds with 47 mm.
- The drive must be installed so that it cannot get wet.
- Do not install drives in surroundings which are at risk of explosion or in mobile appliances (e.g. motor vehicles).
- Keep children away from the (remote) control unit.

# Connection/Installation/Commissioning

## Remove of the motor cable plug

**Warning!** Risk of injury due to electric shock. When the motor cable plug is removed the supply line must be volt free.



## Remove the motor cable plug

Switch off voltage supply.

1. Press locking mechanism on the plug towards the cable using a screwdriver.
2. Pull out the plug.

## Insert the motor cable plug

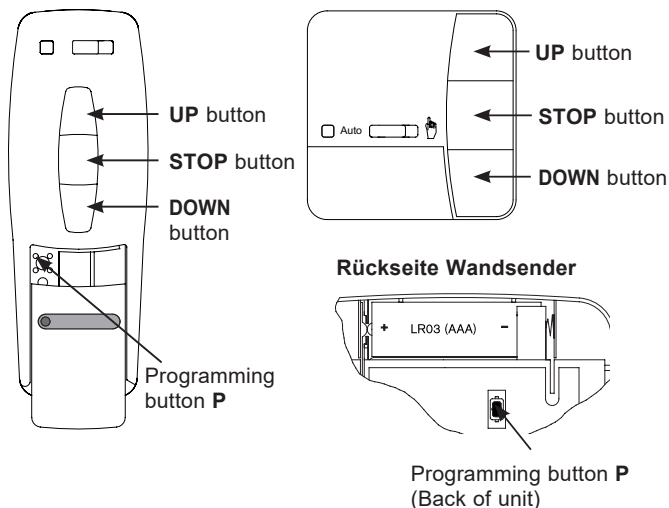
3. Switch off voltage supply. Insert plug until locking mechanism engages.

## Types of installation

Different types of installation are possible:

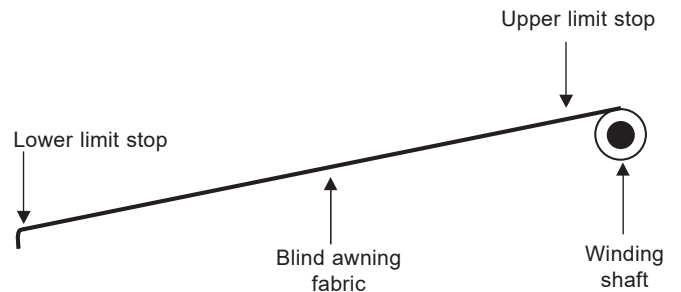
Type of installation
1. Upper/lower end position freely adjustable
2. Fixed upper limit stop lower end position freely adjustable
3. Fixed upper and lower limit stop
4. Upper end position freely adjustable, fixed lower limit stop

## Explanation of ProLine buttons Hand-held/wall transmitter



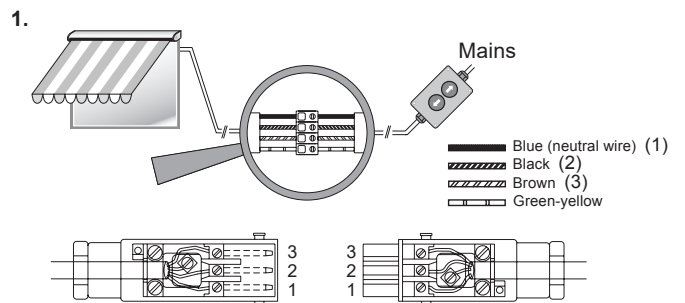
## Commissioning

**Note:** The drive is in commissioning mode when delivered.



## Assembly cable connection

(only permissible for commissioning or setting procedures)

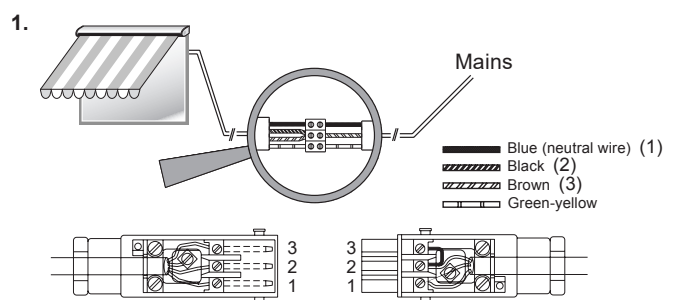


2. Switch on mains.

You can now set the end positions with the assembly cable.

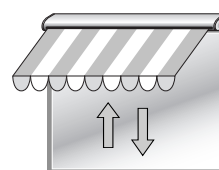
**Please note:** Press the travel key until the drive signals the transition into the programming mode, by a short automatic STOP. You can now program the end positions.

## Radio connection (transmitter operation)



2. Switch on mains.

## Only at commissioning



3. The drive travels upwards and downwards for a short time. The motor is in radio mode. You can now program the transmitter.

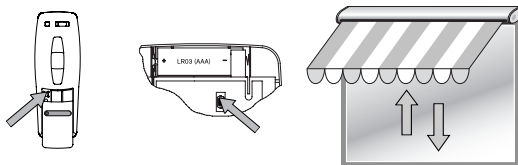
# Programming the transmitter/ Programming further transmitters

## Programming the transmitter

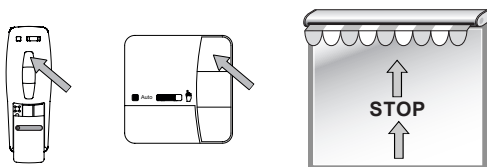
**Condition:** The drive is in radio mode.  
The end positions must have been programmed.  
If the end positions have not been programmed,  
remove the blind from the shaft.

### 1. Switch off/on mains.

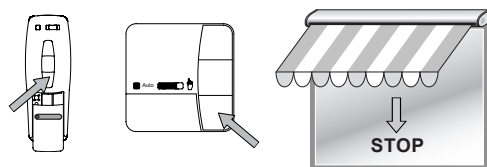
When the mains has been switched off for a short time,  
the drive is ready to be programmed for 5 minutes.



### 2. Press programming switch **P** on your transmitter. The drive runs up and down for 2 minutes.



### 3. Press the **UP** button **immediately** after the start of upward travel.



### 4. Press the **DOWN** button **immediately** after the start of downward travel. The drive will stop. The transmitter is now programmed.

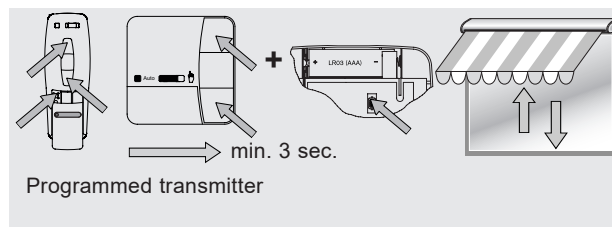
## Programming procedure for other transmitters

Programming procedure possible for max. 16 transmitters.

In order to program further transmitters, start with the new transmitter at 1

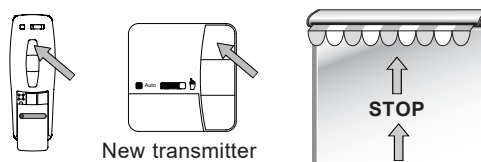
or

### 1. Switch off/on mains

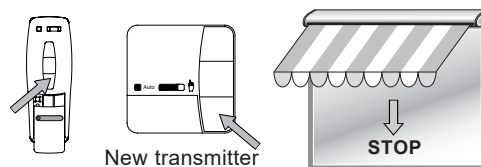


### 2. Press **simultaneously:**

**UP** and **DOWN** buttons and programming button **P** on the programmed transmitter for min. 3 seconds.  
The drive runs up and down for 2 minutes.



### 3. Press the **UP** button **immediately** after the start of upward travel.



### 4. Press the **DOWN** button **immediately** after the start of downward travel. The drive will stop. The transmitter is now programmed.

## Stopping the radio programming mode

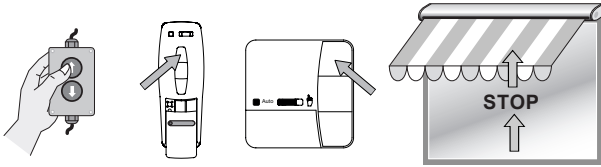
→ see transmitter instructions

# End position setting

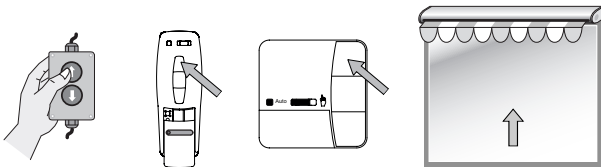
## Installation method 1: Upper/lower end position freely adjustable

### Installation method 1: Upper/lower end position freely adjustable

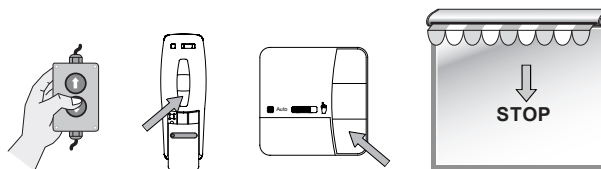
**Note:** Ensure that the equipment is correctly connected.  
(Assembly cable or transmitter operation)



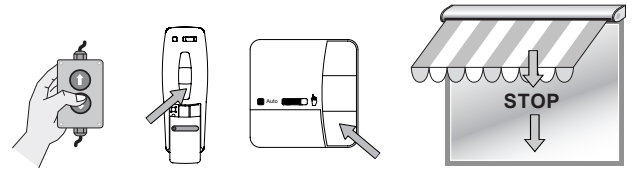
1. Move the blind up to approx. 5 cm before the desired upper end position.  
The drive starts up slowly with a short STOP.



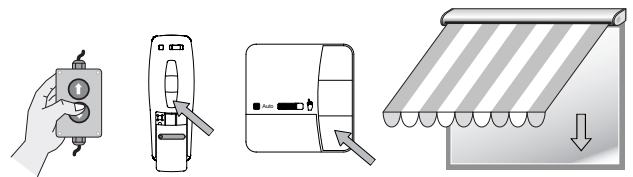
2. Press the **UP** button again.  
Go to the desired upper end position.  
It is possible to make corrections using the buttons.



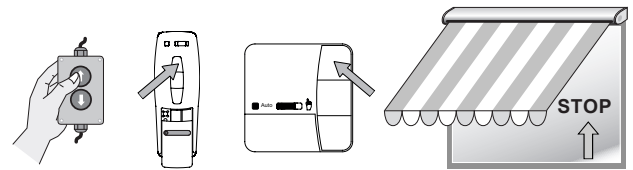
3. Press the **DOWN** button until the drive stops automatically.  
The upper end position has been set.



4. Press the **DOWN** button again.  
Move the blind down until it is a short distance above the desired lower end position.  
The drive starts up slowly with a short STOP



5. Travel to the desired lower end position.  
It is possible to make corrections using the buttons.



6. Press the **UP** button until the drive stops automatically.  
The lower end position has been set.  
Setting of the end positions is now complete.

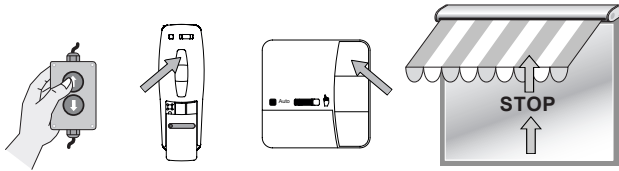
**Note:** The blind protection system is only adapted to the blind after a complete, uninterrupted upwards and downwards travel.

# End position setting

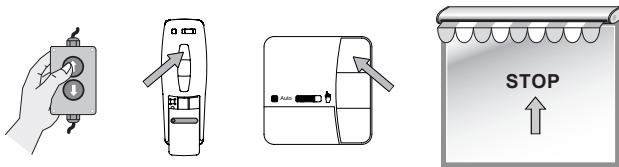
## Installation method 2: Fixed upper limit stop/lower end position freely adjustable

### Installation method 2: Fixed upper limit stop/lower end position freely adjustable

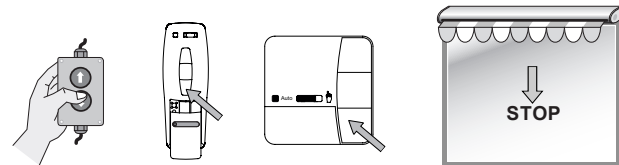
**Note:** Ensure that the equipment is correctly connected.  
(Assembly cable or transmitter operation)



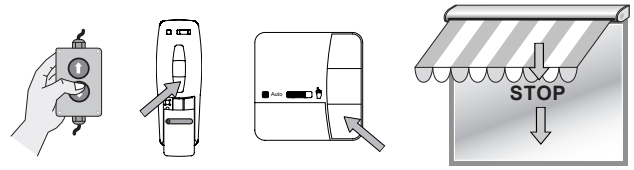
1. Move the blind up to approx. 5 cm before the upper limit stop.  
The drive starts up slowly with a short STOP.



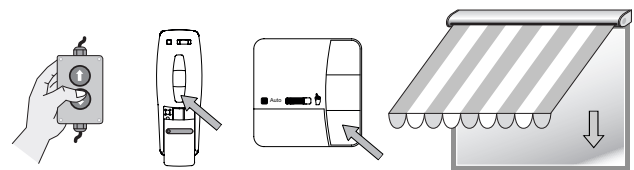
2. Press the **UP** button again.  
Approach the upper limit stop.  
The drive switches off automatically when it reaches the limit stop.



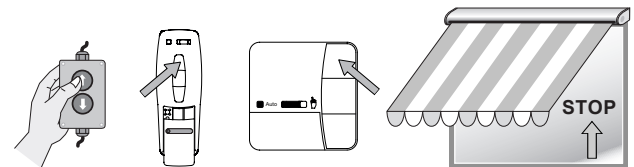
3. Press the **DOWN** button until the drive stops automatically.  
The upper end position has been set.



4. Press the **DOWN** button again.  
Move the blind down until it is a short distance above the desired lower end position.  
The drive starts up slowly with a short STOP.



5. Travel to the desired lower end position.  
It is possible to make corrections using the buttons.



6. Press the **UP** button until the drive stops automatically.  
The lower end position has been set.

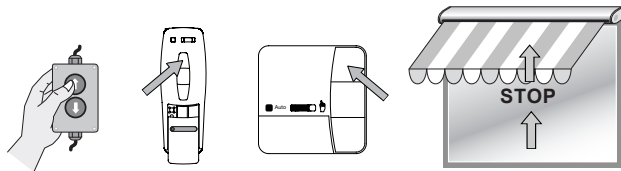
Setting of the end positions is now complete.

# End position setting

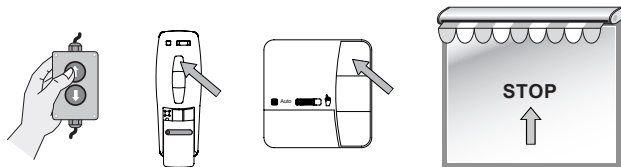
## Installation method 3: Fixed upper and lower limit stop

### Installation method 3: Fixed upper and lower limit stop

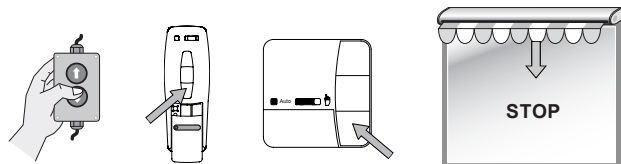
**Note:** Ensure that the equipment is correctly connected.  
(Assembly cable or transmitter operation)



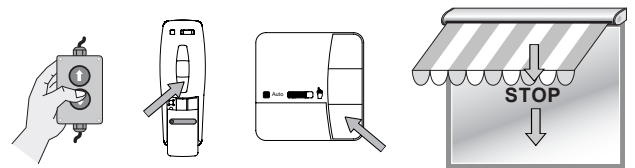
1. Move the blind up to approx. 5 cm before the upper limit stop.  
The drive starts up slowly with a short STOP.



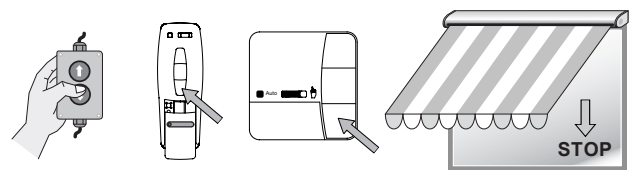
2. Press the **UP** button again.  
Approach the upper limit stop.  
The drive switches off automatically when it reaches the limit stop.



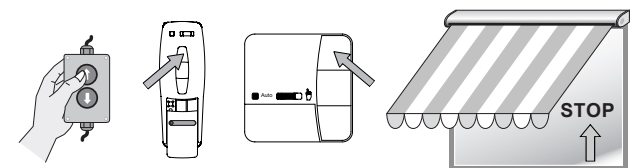
3. Press the **DOWN** button until the drive stops automatically.  
The upper end position has been set.



4. Press the **DOWN** button again.  
Run the blind until shortly before the lower limit stop.  
The drive starts up slowly with a short STOP.



5. Approach the lower limit stop.  
The drive switches off automatically when it reaches the limit stop.



6. Press the **UP** button until the drive stops automatically.  
The lower end position has been set.

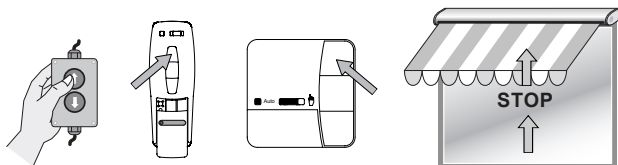
Setting of the end positions is now complete.

# End position setting

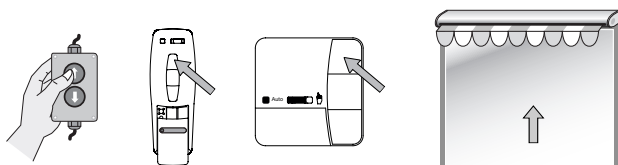
## Installation method 4: Upper end position freely adjustable/fixed lower limit stop

### Installation method 4: Upper end position freely adjustable/fixed lower limit stop

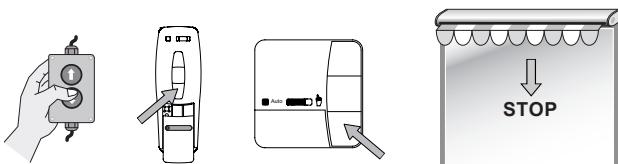
**Note:** Ensure that the equipment is correctly connected.  
(Assembly cable or transmitter operation)



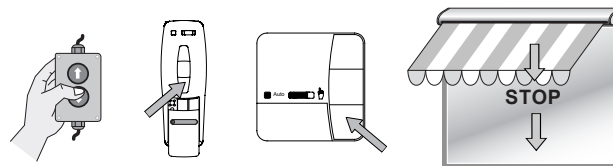
1. Move the blind up to approx. 5 cm before the desired upper end position.  
The drive starts up slowly with a short STOP.



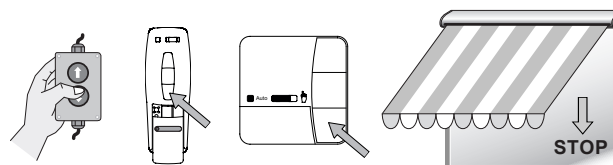
2. Press the **UP** button again.  
Go to the desired upper end position.  
It is possible to make corrections using the buttons.



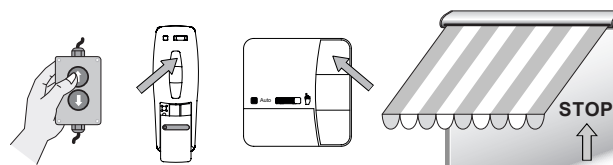
3. Press the **DOWN** button until the drive stops automatically.  
The upper end position has been set.



4. Press the **DOWN** button again.  
Run the blind until shortly before the lower limit stop.  
The drive starts up slowly with a short STOP.



5. Approach the lower limit stop.  
The drive switches off automatically when it reaches the limit stop.



6. Press the **UP** button until the drive stops automatically.  
The lower end position has been set.  
Setting of the end positions is now complete.

#### Approach intermediate position 1

→ see transmitter instructions

#### Approach intermediate position 2

→ see transmitter instructions

#### Delete intermediate position 1

→ see transmitter instructions

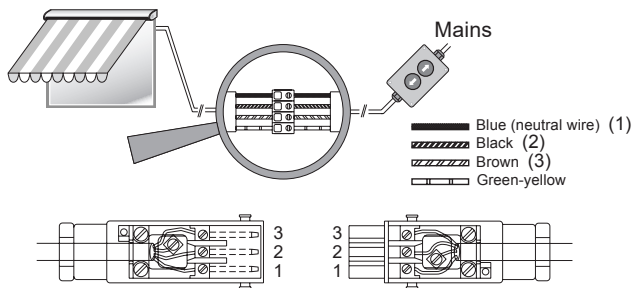
#### Delete intermediate position 2

→ see transmitter instructions

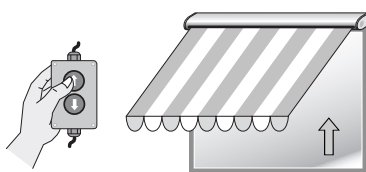
# Changing/Deleting the end positions

## Notes on troubleshooting

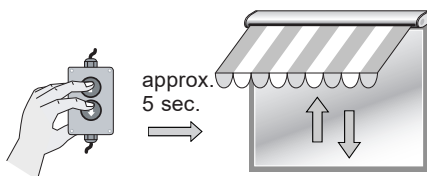
### Changing / Deleting the end positions using the assembly cable



1. Switch on mains.



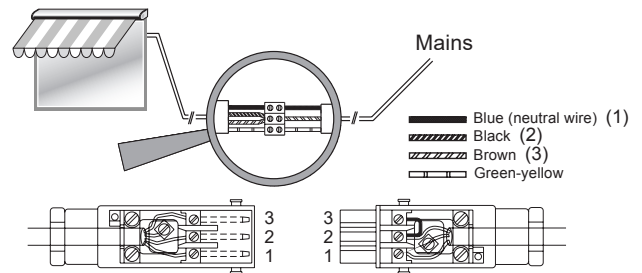
2. Move the blind to a centre position.  
The drive is ready for the program to be deleted.



3. Press both buttons on the assembly cable **simultaneously**.  
The drive travels up and down briefly after approx. 5 seconds.

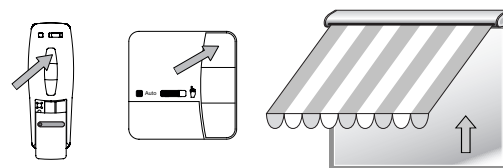
Deletion of the end positions is complete.  
You can now re-program the end positions.

### Changing/Deleting the end positions using the radio transmitter

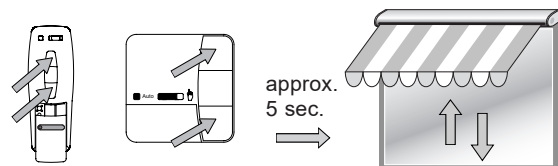


1. Switch off/on mains.

After the mains has been switched off for a short time, the drive is ready to be deleted for approx. 5 minutes.



2. Move the blind to the centre position.



3. Press **UP** and **DOWN** button **simultaneously**.  
The drive travels up and down briefly after approx. 5 seconds.  
Deletion of the end positions is complete.  
You can now re-program the end positions.

#### Deletion of individual transmitters

→ see instructions for the control unit

#### Deletion of all transmitters

→ see instructions for the control unit

### Troubleshooting

Fault	Possible cause	Remedy
• Radio programming mode does not start	<ul style="list-style-type: none"> <li>• Faulty connection</li> <li>• Drive not connected to mains</li> <li>• Time frame already expired (5 min)</li> <li>• Thermostat has triggered</li> <li>• Radio transmitter has no battery</li> </ul>	<ul style="list-style-type: none"> <li>• Check connection</li> <li>• Check mains voltage</li> <li>• Interrupt mains voltage briefly</li> <li>• Allow drive to cool down</li> <li>• Check transmitter (LED must be illuminated)</li> </ul>
• Radio transmitter not in programming mode	<ul style="list-style-type: none"> <li>• UP/DOWN button pressed too late. Note time frame (1 sec.)</li> <li>• Sender ist bereits eingelernt</li> </ul>	<ul style="list-style-type: none"> <li>• Restart radio programming mode</li> <li>• Push STOP button</li> </ul>
• Drive does not react to double button-pressing on radio transmitter	<ul style="list-style-type: none"> <li>• Time frame already run out when mains power returns (5 Min.)</li> <li>• Drive not connected to mains</li> <li>• Transmitter is not programmed</li> </ul>	<ul style="list-style-type: none"> <li>• Interrupt power supply briefly</li> <li>• Check mains connection</li> <li>• Program the transmitter</li> </ul>
• Drive is no longer reacting	<ul style="list-style-type: none"> <li>• Thermostat has triggered</li> </ul>	<ul style="list-style-type: none"> <li>• Allow drive to cool down</li> </ul>
• Drive stops during travel einer Fahrbewegung	<ul style="list-style-type: none"> <li>• Thermostat has triggered</li> </ul>	<ul style="list-style-type: none"> <li>• Allow drive to cool down</li> </ul>
• Drive does not accept programmed end positions	<ul style="list-style-type: none"> <li>• Random travel</li> <li>• Travel to end position/limit stop too short</li> </ul>	<ul style="list-style-type: none"> <li>• Delete end positions</li> <li>• Re-program end positions</li> <li>• Drive has to travel to short STOP</li> </ul>



# EC Declaration of conformity

## Notes on the EC declaration of conformity

elero GmbH hereby declares that the tubular drive Sun-Top-868 complies with the basic prerequisites and the other relevant provisions of the EC directives. The complete declaration of conformity can be found in the download area of our website

[www.elero.com/en/downloads-service/](http://www.elero.com/en/downloads-service/)